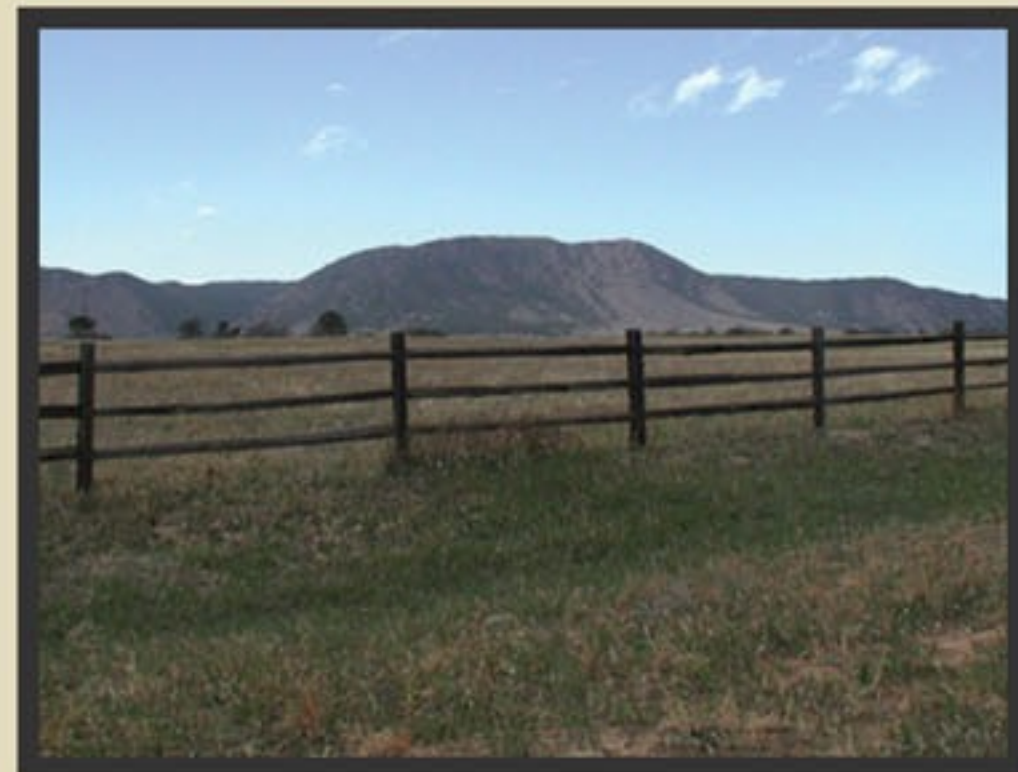
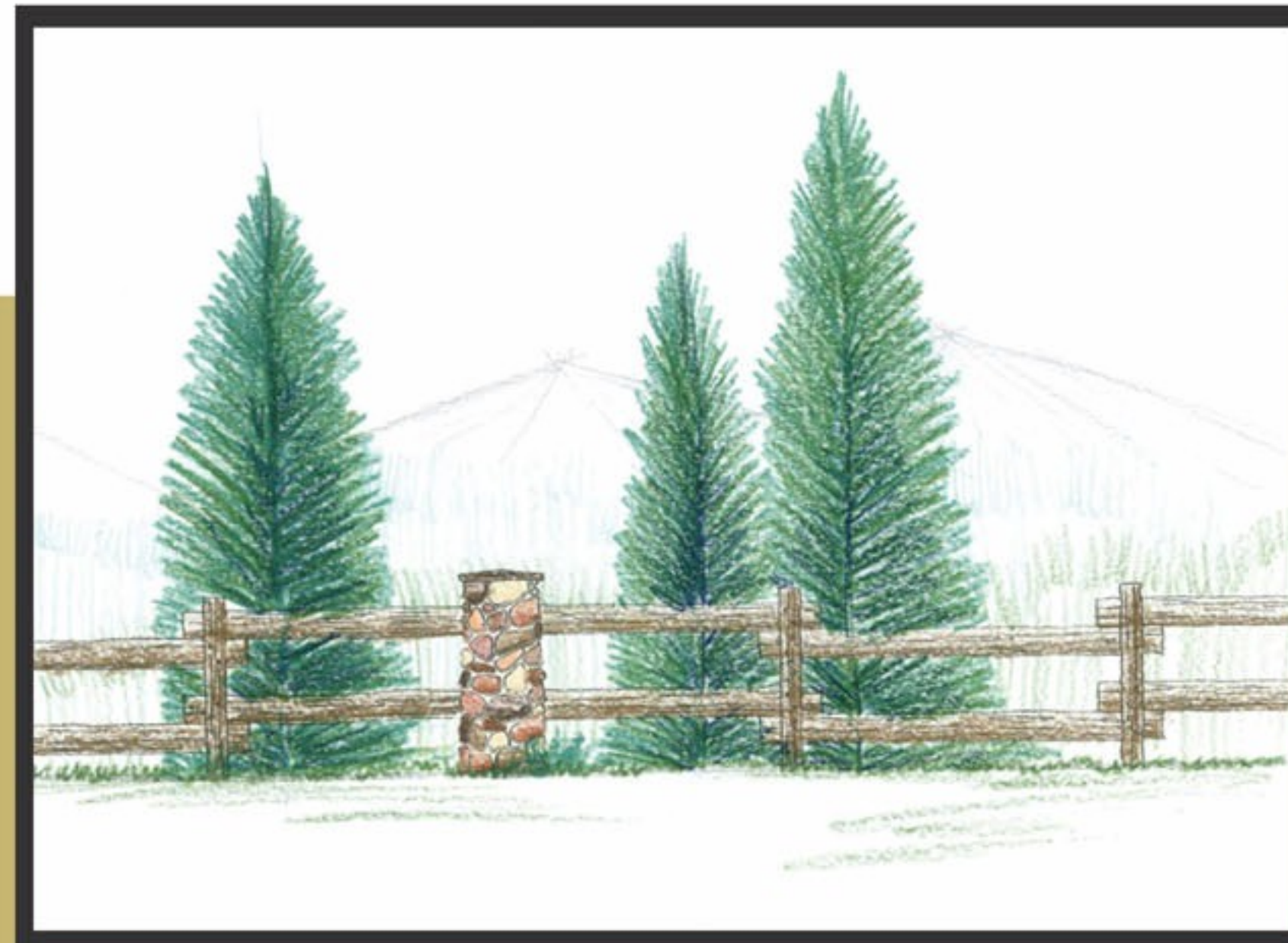


# FOREST LAKES



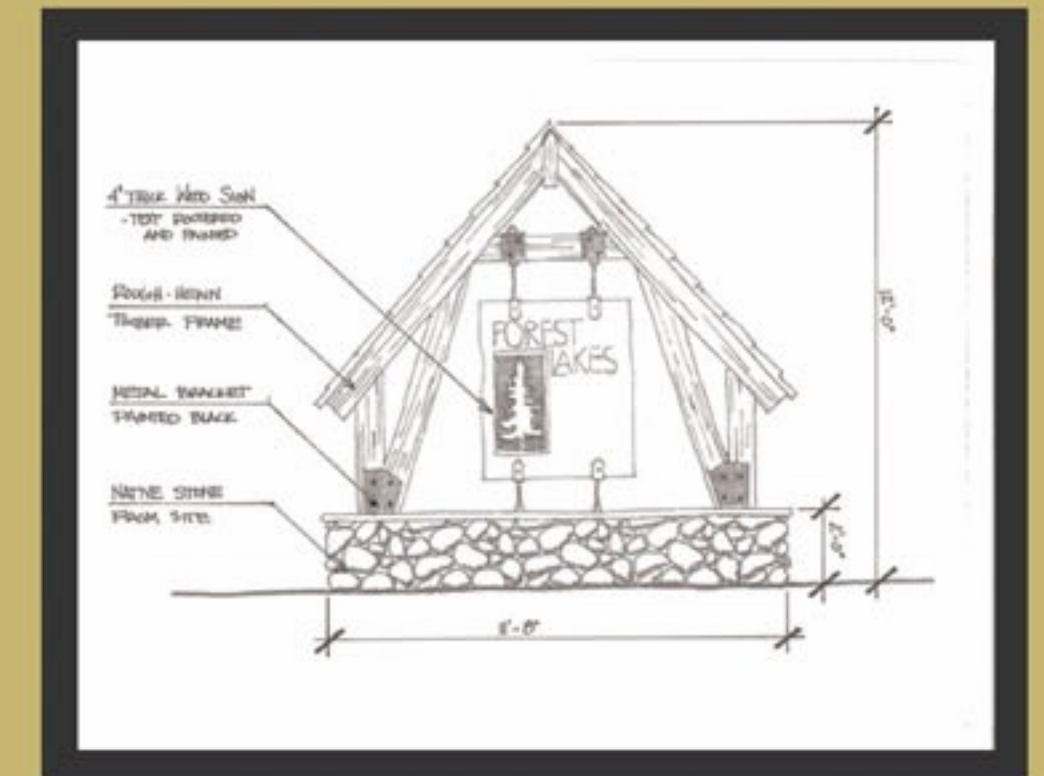
## FOREST LAKES DRIVE STREETScape



### STREETSCAPES

A two-rail timber fence will be used along any double frontage lot within the development and along the entirety of Forest Lakes Drive. The fence will have a staggered rail to provide visual interest, both in showing the construction process and emphasizing the rhythm of the posts.

The pilasters will be constructed of the same native stone used on many other elements throughout the development. This will help reinforce a consistent theme throughout.



### FOREST LAKES ENTRY FEATURE

The design of the Entry Feature for Forest Lakes will speak to the great State and National Park entry signs. It will be a rustic sign that uses rough-hewn timbers for structural support and the native stone for its base.

The trussing for the sign has been interpreted from the existing architecture found in the Homestead Park site, as shown below.